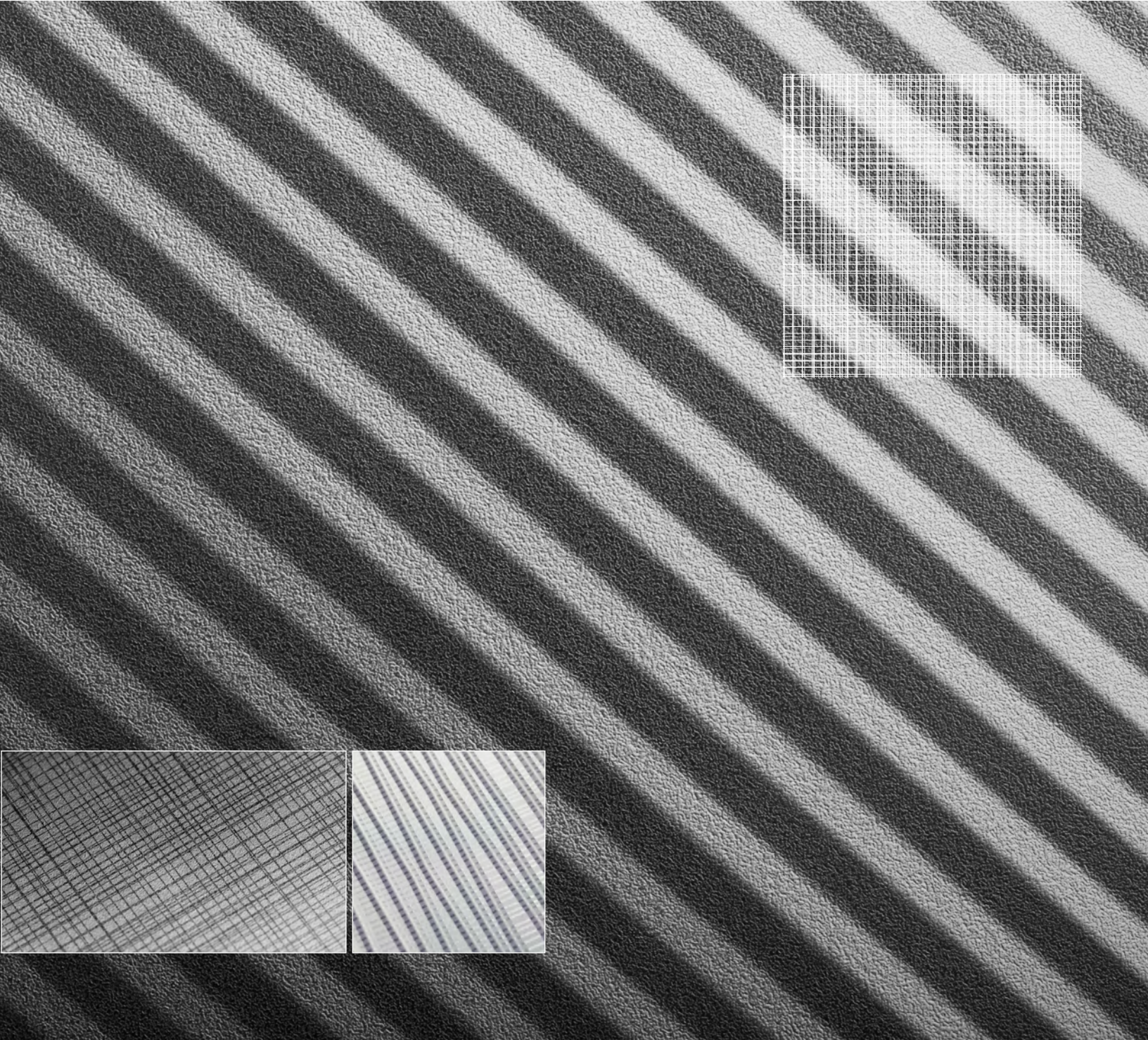




STAINLESS STEEL

PRODUCT DATA





STAINLESS STEEL

PRODUCT DATA

Unmatched in quality and beauty, Forms+Surfaces is the world's premiere resource for **Stainless Steel** sheet goods and related products. You'll find a wide variety of finishes and patterns with limitless design options.

For applications that require exceptional resistance to abrasion and wear, select among our High-Durability finishes including Sandstone, Sandstone Random, Seastone, Linen and Marquisette. These work-hardened surfaces are extraordinarily durable and perfect for high-traffic public areas.

MATERIAL DESCRIPTION

Stainless steel selections are defined by three basic parameters that are key to product specification:

| MATERIAL | FINISH | PATTERN |
|--|---|---|
| Choose a metal; in this case, stainless steel. | A variety of distinctive finishes are available including standard and High-Durability options. Please see page two for available finish options. | The pattern will be applied to the metal/finish combination you have selected. Standard Impression, Eco-Etch, Fusion and Screens patterns are shown on pages three through nine. Custom patterns can also be requested. |

PRODUCTS & APPLICATIONS

| SHEET GOODS | LEVEL [®] WALL SYSTEMS & ELEVATOR INTERIORS | RAIL INFILL PANELS | ARCHITECTURAL ACCENTS |
|---|---|---|--|
| <ul style="list-style-type: none"> Includes our full line of stainless steel materials in standard sheet sizes or sheared to your specifications. Standard sheet sizes are 48" x 96" (1219 mm x 2438 mm) and 48" x 120" (1219 mm x 3048 mm) and standard sheet thicknesses are 0.8 mm and 1.5 mm. Edge returns and many other add-on features are available. | <ul style="list-style-type: none"> Stainless steel is available as standard inset panel options in LEVEL[®] Wall Systems & LEVEL[®] Elevator Interiors. For LEVEL[®] Wall Systems, stainless steel can be used with Minimal, Capture, Float and Blind panel types. | <ul style="list-style-type: none"> Beautiful infill options to complement our Silhouette Railing System. | <ul style="list-style-type: none"> Trim, wainscoting, counter facings and more. |
| DOORS | CABFORMS [®] ELEVATOR INTERIORS | ELEVATOR DOOR SKINS | COLUMN COVERS |
| <ul style="list-style-type: none"> Stainless steel door options include Eco-Etch, Impression, Stile & Rail and System 7 Doors. Many models are available with a full range of UL[®] fire labeling options. | <ul style="list-style-type: none"> Stainless steel is available as facing material for our Series 1000 Elevator Interiors and as standard inset panel options or as cladding on stiles and rails in our Series 2000 CabForms Elevator Interiors. | <ul style="list-style-type: none"> Stainless steel may be specified as durable and highly attractive skins for elevator doors or hoistway doors. | <ul style="list-style-type: none"> For round, square or irregularly shaped columns. |

MAINTENANCE & FIRE RATING

| MAINTENANCE | FIRE RATING |
|---|--|
| Fingerprints and smudges can be removed using a non-chlorinated spray cleaner/degreaser such as Simple Green [®] and a microfiber cloth. Do not use harsh abrasives, acids or chlorine-based cleaners or cleaning tools containing carbon steel, such as steel wool or wire brushes. | Stainless Steel is NFPA and IBC class A fire rated and UBC class 1 fire rated. |

ENVIRONMENTAL CONSIDERATIONS

Please refer to the Stainless Steel Product Environmental Data Sheet for detailed environmental impact information.

HOW TO SPECIFY

To order please indicate finish, pattern and quantity.





STAINLESS STEEL

FINISH OPTIONS

Stainless steel is available in a variety of distinctive finishes including standard and High-Durability options. High-Durability finishes—designated by the “HD” logo below—are manufactured in a process that creates a work-hardened surface with enhanced resistance to abrasion and wear.



SANDSTONE™



SANDSTONE RANDOM™



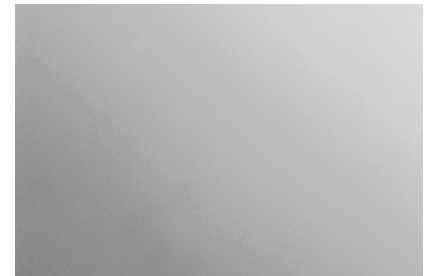
SEASTONE™



LINEN™



MARQUETTE™



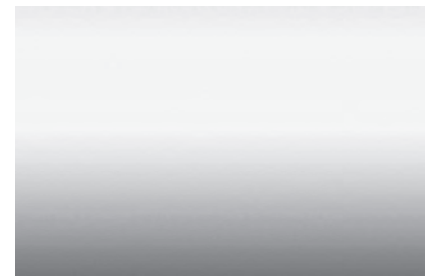
MIST™



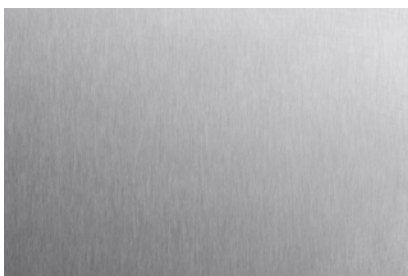
ICE™



RANDOM



MIRROR



SATIN

Note: Because different computers will render colors and textures differently, actual finishes may vary from those shown.

T 1.800.451.0410 | F 412.781.7840 | www.forms-surfaces.com

FORMS+SURFACES®



Member of the USGBC | Member of the EGBC | LEED® Accredited Professional on Staff | FSC Certified Supplier | SCS-COC-001461 | ©1996 Forest Stewardship Council A.C.
Offices Worldwide | © 2011 Forms+Surfaces® All dimensions are nominal. Specifications and pricing subject to change without notice.
For the most current version of this document, please refer to our website at www.forms-surfaces.com.



STAINLESS STEEL

PRODUCT DATA

PATTERN OPTIONS

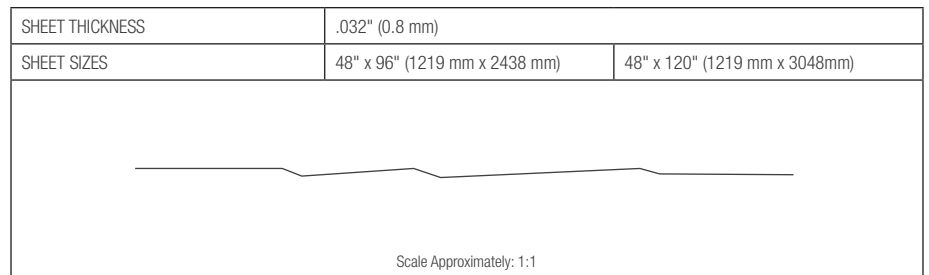
Patterns are optional applied designs that add visual interest and expanded customization potential to stainless steel surfaces. From a functional standpoint, patterns pick up where metals and finishes leave off. Forms+Surfaces stainless steel patterns are grouped into four broad categories: Impression, Eco-Etch, Fusion and Screens.

IMPRESSION™ PATTERN OPTIONS

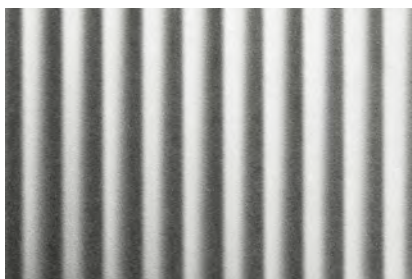
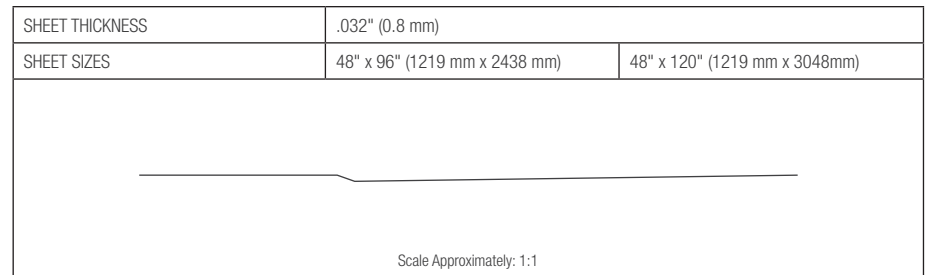
Forms+Surfaces proprietary manufacturing capabilities include large-scale stamping equipment that can apply unique, full-press patterns across an entire sheet of material using a single tool. The result is a series of beautiful, high-relief patterns that add visual impact, enhanced durability and a rich, tactile feel. Some Impression patterns are also available in other materials such as Fused Metal®, ViviForm Impression Glass and our exclusive Bonded Quartz and Bonded Metal®, making it easy to carry a design theme throughout an installation in a variety of materials.



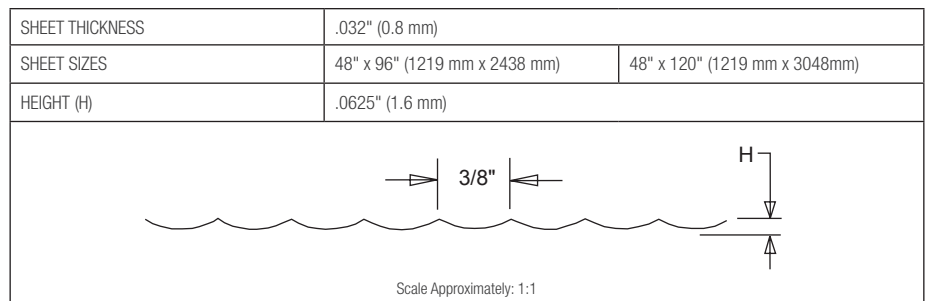
CHAMPAGNE™



CHARDONNAY™



DALLAS™



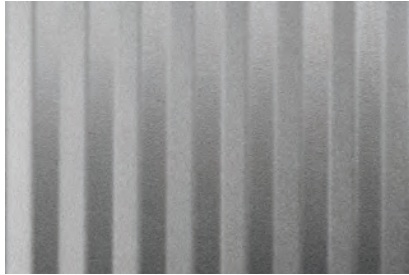
Note: Pattern is available in horizontal or vertical orientation





STAINLESS STEEL

PRODUCT DATA



DENVER™

| | | |
|-----------------|-------------------------------|--------------------------------|
| SHEET THICKNESS | .032" (0.8 mm) | |
| SHEET SIZES | 48" x 96" (1219 mm x 2438 mm) | 48" x 120" (1219 mm x 3048 mm) |
| HEIGHT (H) | .053" (1.3 mm) | |

Scale Approximately: 1:1

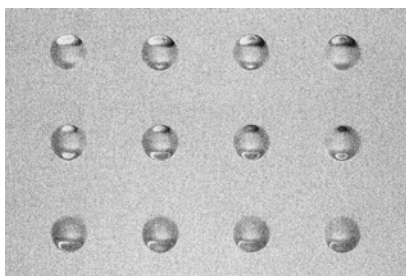
Note: Pattern is available in horizontal or vertical orientation



KALAHARI™

| | | |
|-----------------|-------------------------------|--------------------------------|
| SHEET THICKNESS | .032" (0.8 mm) | |
| SHEET SIZES | 48" x 96" (1219 mm x 2438 mm) | 48" x 120" (1219 mm x 3048 mm) |

Scale Approximately: 1:1



CIRCLE

| | | | | | |
|---|-------------|------------|-----------|-----------|-----------|
| AVAILABLE EMBOSSURE SIZES | .312" dia. | .375" dia. | .50" dia. | .75" dia. | 1.0" dia. |
| MINIMUM VERTICAL AND HORIZONTAL SPACING | 2" c.c. | 2" c.c. | 2" c.c. | 2" c.c. | 3" c.c. |
| HEIGHT (H) | .08" (2 mm) | | | | |

Scale Approximately: 1:1

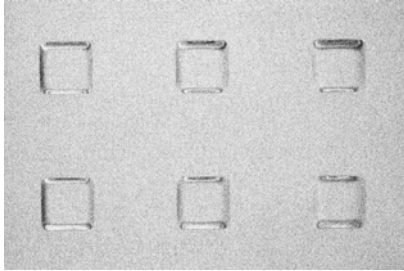
| | | |
|-----------------------------|-------------------------------|--------------------------------|
| AVAILABLE SHEET THICKNESSES | .032" (0.8 mm) | .063" (1.5 mm) |
| AVAILABLE SHEET SIZES | 48" x 96" (1219 mm x 2438 mm) | 48" x 120" (1219 mm x 3048 mm) |





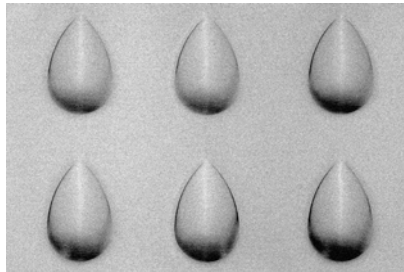
STAINLESS STEEL

PRODUCT DATA



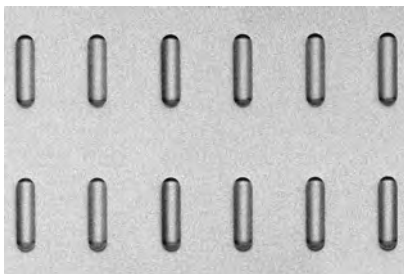
SQUARE

| | | | | | |
|---|-------------------------------|-----------|--------------------------------|---------|-----------|
| AVAILABLE EMBOSSURE SIZES | .375" squ. | .50" squ. | .625" squ | 1" squ. | 1.5" squ. |
| MINIMUM VERTICAL AND HORIZONTAL SPACING | 2" c.c. | 2" c.c. | 2" c.c. | 3" c.c. | 4" c.c. |
| HEIGHT (H) | .06" (1.5 mm) | | | | |
| | | | | | |
| AVAILABLE SHEET THICKNESSES | .032" (0.8 mm) | | .063" (1.5 mm) | | |
| AVAILABLE SHEET SIZES | 48" x 96" (1219 mm x 2438 mm) | | 48" x 120" (1219 mm x 3048 mm) | | |



TEARDROP™

| EMBOSURE SIZE | MINIMUM VERTICAL SPACING | MINIMUM HORIZONTAL SPACING | HEIGHT (H) |
|-----------------------------|-------------------------------|----------------------------|--------------------------------|
| .88" x 1.4" | 3" c.c. | 3" c.c. | .134" (3.4 mm) |
| | | | |
| AVAILABLE SHEET THICKNESSES | .032" (0.8 mm) | | .063" (1.5 mm) |
| AVAILABLE SHEET SIZES | 48" x 96" (1219 mm x 2438 mm) | | 48" x 120" (1219 mm x 3048 mm) |



TECH™

| EMBOSURE SIZE | MINIMUM VERTICAL SPACING | MINIMUM HORIZONTAL SPACING | HEIGHT (H) |
|-----------------------------|-------------------------------|----------------------------|--------------------------------|
| .25" x 1" | 1.5" c.c. | 1" c.c. | .075" (1.9 mm) |
| | | | |
| AVAILABLE SHEET THICKNESSES | .032" (0.8 mm) | | .063" (1.5 mm) |
| AVAILABLE SHEET SIZES | 48" x 96" (1219 mm x 2438 mm) | | 48" x 120" (1219 mm x 3048 mm) |





STAINLESS STEEL

PRODUCT DATA

ECO-ETCH®

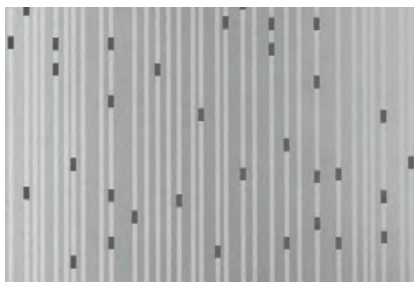
Beautiful etched designs are applied to stainless steel using an advanced photolithographic bead-blasting system instead of acids or other harmful chemicals. Advantages of the Eco-Etch process include:

| SIZE | SPEED | CONSISTENCY | ECOLOGICALLY RESPONSIBLE |
|--|--|--|--|
| The largest physical etching system in North America, our equipment can handle materials up to two meters wide by six meters long. Standard sheet sizes of 48" x 96" and 48" x 120" and standard sheet thicknesses of 0.8 mm and 1.5 mm are available. | The physical etching process can be completed in a fraction of the time required for traditional chemical etching. | Our proprietary computer-controlled system ensures an even blast pressure and a consistent finish, even on the largest surfaces. | Because our Eco-Etch is physically applied, it does not require etching acid or other harmful chemicals and no toxic waste is generated. The beads used in the process are contained within a closed chamber; used beads are recycled and returned to the process for reuse. |

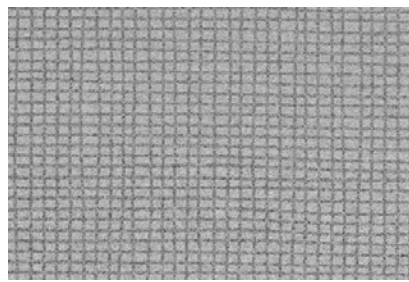
STANDARD AND CUSTOM ECO-ETCH PATTERNS

Standard designs include both overall and full-sheet patterns. Eco-Etch Doors and Elevator Door Skins also come in their own range of patterns optimized for door face applications. Please note that our standard patterns are only starting points; the flexibility and speed of our Eco-Etch system allow a wealth of design options with artwork supplied by the specifier or developed by Forms+Surfaces.

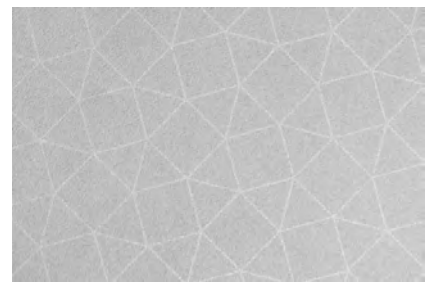
STANDARD ECO-ETCH PATTERNS



CITY LIGHTS™



MARQUETTE™



MICA™



SEAGRASS™



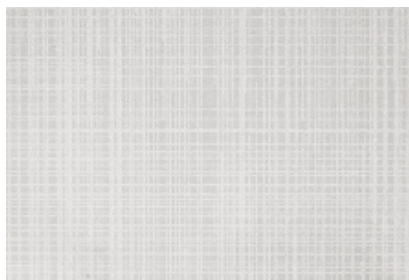
SILKWORM™



STRIPE™



TESSEL™



THATCH™



TIDAL™

T 1.800.451.0410 | F 412.781.7840 | www.forms-surfaces.com

FORMS+SURFACES®



Member of the USGBC | Member of the EGBC | LEED® Accredited Professional on Staff | FSC Certified Supplier | SCS-COC-001461 | ©1996 Forest Stewardship Council A.C.
 Offices Worldwide | © 2011 Forms+Surfaces® All dimensions are nominal. Specifications and pricing subject to change without notice.
 For the most current version of this document, please refer to our website at www.forms-surfaces.com.

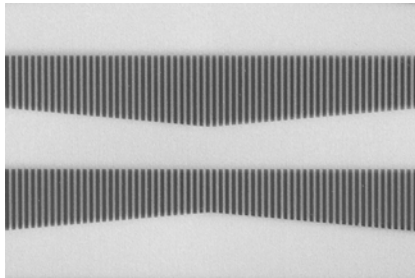


STAINLESS STEEL

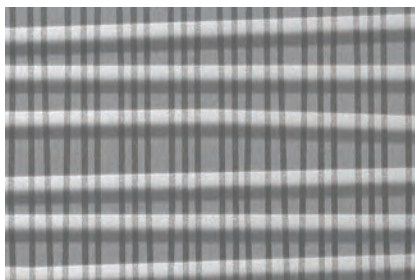
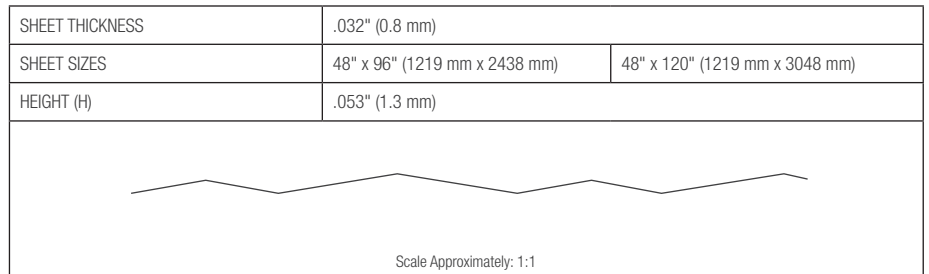
PRODUCT DATA

FUSION™

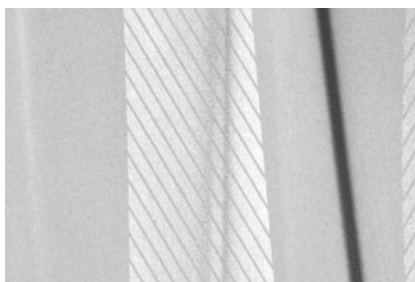
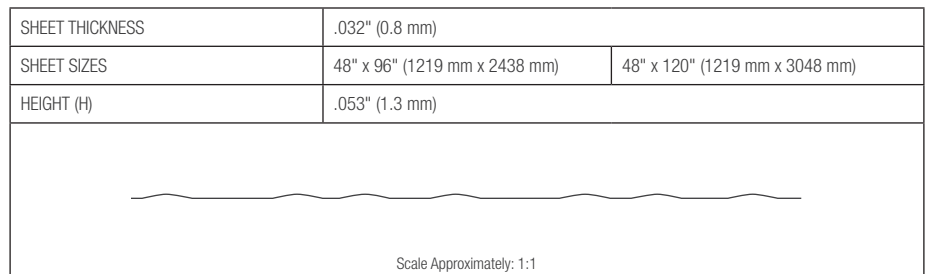
Fusion is a collection of surfaces created by the Forms+Surfaces Design Studio. As the name implies, each design is created by combining two or more pattern types, including Impression, Eco-Etch and Screens, to create a unique and visually intriguing surface.



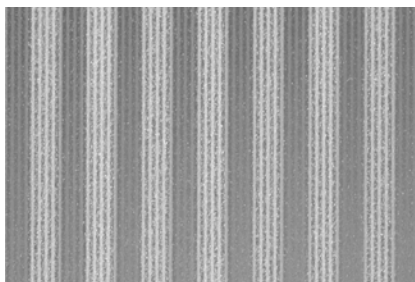
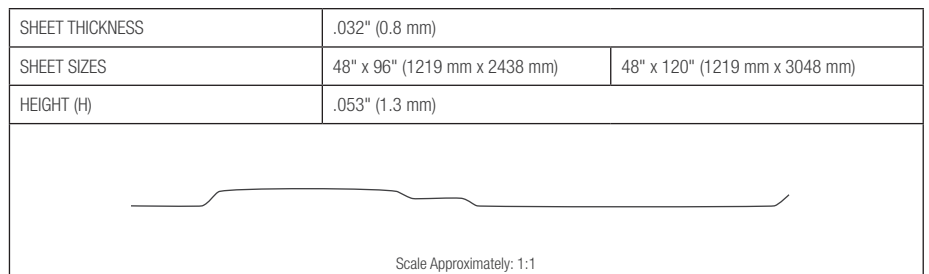
CARBON™



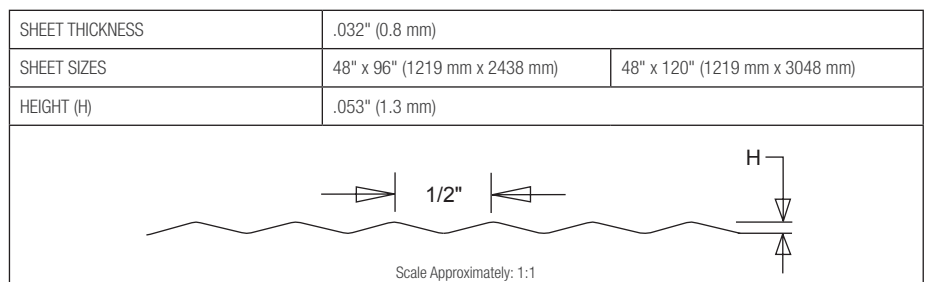
CINCH™



MESA™



MORAINÉ™



Note: Pattern is available in horizontal or vertical orientation

T 1.800.451.0410 | F 412.781.7840 | www.forms-surfaces.com

FORMS+SURFACES®



Member of the USGBC | Member of the EGBC | LEED® Accredited Professional on Staff | FSC Certified Supplier | SCS-COC-001461 | ©1996 Forest Stewardship Council A.C.
 Offices Worldwide | © 2011 Forms+Surfaces® All dimensions are nominal. Specifications and pricing subject to change without notice.
 For the most current version of this document, please refer to our website at www.forms-surfaces.com.

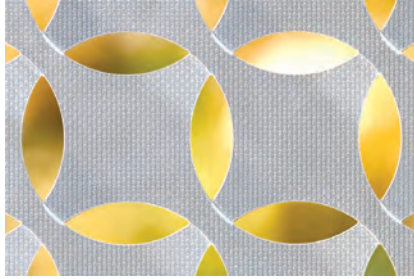


STAINLESS STEEL

PRODUCT DATA

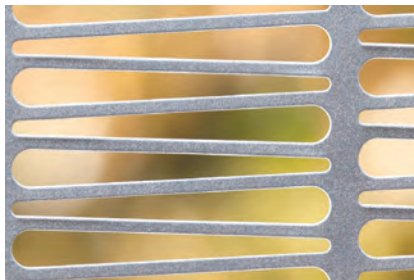
SCREENS

Screens can be used to divide space, provide privacy, or to alter or protect from light. Screens may be specified in any sheet size up to the maximum indicated in the chart. Screens can be combined with our Eco-Etch patterns for added dimension and individuality. For Ideal pattern alignment, some patters have a minimum border requirement. The Circa and Valencia patterns must run to the edge of the sheet and are not available with a border. For those screens available with borders, the minimum border dimensions are for full 48" x 96" sheets. When specifying smaller sizes, borders can be as narrow as 1" (25.4 mm).



CIRCA™

| | |
|---------------------------------|-----------------------------------|
| SHEET THICKNESS | .064" (1.5 mm) |
| MAXIMUM SHEET SIZE | 44.8" X 94.4" (1138 mm X 2398 mm) |
| MINIMUM BORDER @ 48" X 96" | Not available with border |
| PERCENT OPEN | 27% |
| <p>Scale Approximately: 1:1</p> | |



KENTE™

| | |
|---------------------------------|---|
| SHEET THICKNESS | .032" (0.8 mm) and .064" (1.5 mm) |
| MAXIMUM SHEET SIZE | 48" X 96" (1128 mm X 2357 mm) |
| MINIMUM BORDER @ 48" X 96" | 4.5" (114 mm) vertical, 1" (26 mm) horizontal |
| PERCENT OPEN | 54% |
| <p>Scale Approximately: 1:1</p> | |



LOTUS™

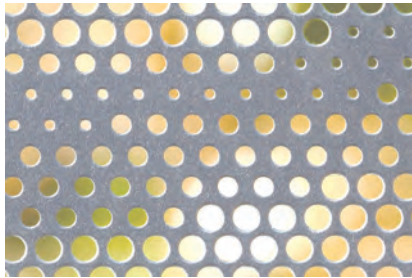
| | |
|---------------------------------|---------------------------------------|
| SHEET THICKNESS | .032" (0.8 mm) and .064" (1.5 mm) |
| MAXIMUM SHEET SIZE | 48" X 96" (1128 mm X 2357 mm) |
| MINIMUM BORDER @ 48" X 96" | 1.75" (26 mm) vertical and horizontal |
| PERCENT OPEN | 52% |
| <p>Scale Approximately: 1:1</p> | |






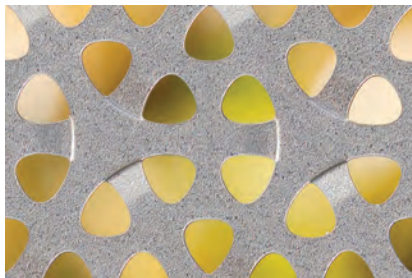
STAINLESS STEEL

PRODUCT DATA




SCAPE™

| | |
|--|------------------------------------|
| SHEET THICKNESS | .032" (0.8 mm) and .064" (1.5 mm) |
| MAXIMUM SHEET SIZE | 48" X 96" (1128 mm X 2357 mm) |
| MINIMUM BORDER @ 48" X 96" | 1" (26 mm) vertical and horizontal |
| PERCENT OPEN | 32% |
|  <p>Scale Approximately: 1:1</p> | |



VALENCIA™

| | |
|--|-----------------------------------|
| SHEET THICKNESS | .064" (1.5 mm) |
| MAXIMUM SHEET SIZE | 44.4" X 92.8" (1128 mm X 2357 mm) |
| MINIMUM BORDER @ 48" X 96" | Not available with border |
| PERCENT OPEN | 32% |
|  <p>Scale Approximately: 1:1</p> | |





STAINLESS STEEL

PRODUCT DATA

CUSTOM PATTERNS

As the international leader in high-quality stainless steel, Forms+Surfaces is always willing to consider custom pattern variations and modifications to meet specific project needs. Please contact us to discuss your requirements.

WEIGHT

Stainless steel is available in two thicknesses. The .032" (0.8 mm) thickness has a standard weight of approximately 1.6 lbs./sq. ft (7.8 kg/sq. m) and the .063" (1.5 mm) thickness weighs approximately 2.5 lbs./sq. ft (12.2 kg/ sq. m).

STANDARD STAINLESS STEEL FINISH AND PATTERN COMBINATIONS

| | IMPRESSION | | | | | | | | | | ECO-ETCH | | | | | | | | FUSION | | | | SCREENS | | | | | | |
|------------------------|-------------------|-----------|------------|--------|--------|----------|--------|--------|----------|------|-------------|--------------|------|----------|----------|--------|--------|-------|--------|--------|--------|-------|---------|---------|-------|-------|-------|-------|----------|
| | Flat (No Pattern) | Champagne | Chardonnay | Dallas | Denver | Kalahari | Circle | Square | Teardrop | Tech | City Lights | Marquissette | Mica | Seagrass | Silkworm | Stripe | Tessel | Tidal | Thatch | Custom | Carbon | Cinch | Mesa | Moraine | Circa | Kente | Lotus | Scape | Valencia |
| STAINLESS STEEL | | | | | | | | | | | | | | | | | | | | | | | | | | | | | |
| Sandstone | • | • | • | • | • | • | • | • | • | • | | | | | | | | | | • | | | | | • | • | • | • | • |
| Sandstone Random | • | | | • | • | | • | • | • | • | | | | | | | | | | | | | | | • | • | • | • | • |
| Seastone | • | • | • | • | • | • | • | • | • | • | • | • | • | • | • | • | • | • | • | • | • | • | • | • | • | • | • | • | • |
| Linen | • | • | • | • | • | • | • | • | • | • | | | | | | | | | | • | | | | | • | • | • | • | • |
| Marquissette | • | | | • | • | | • | • | • | • | | | | | | | | | | | | | | | • | • | • | • | • |
| Mist | • | • | • | • | • | • | • | • | • | • | | | | | | | | | | | | | | | • | • | • | • | • |
| Ice | • | • | • | • | • | • | • | • | • | • | | | | | | | | | | | | | | | • | • | • | • | • |
| Random | • | | | • | • | | • | • | • | • | | | | | | | | | | | | | | | • | • | • | • | • |
| Mirror | • | • | • | • | • | • | • | • | • | • | • | • | • | • | • | • | • | • | • | • | • | • | • | • | • | • | • | • | • |
| Satin | • | • | • | • | • | • | • | • | • | • | • | • | • | • | • | • | • | • | • | • | • | • | • | • | • | • | • | • | • |

